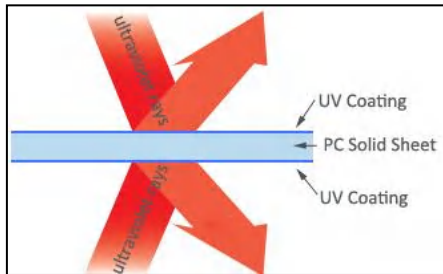
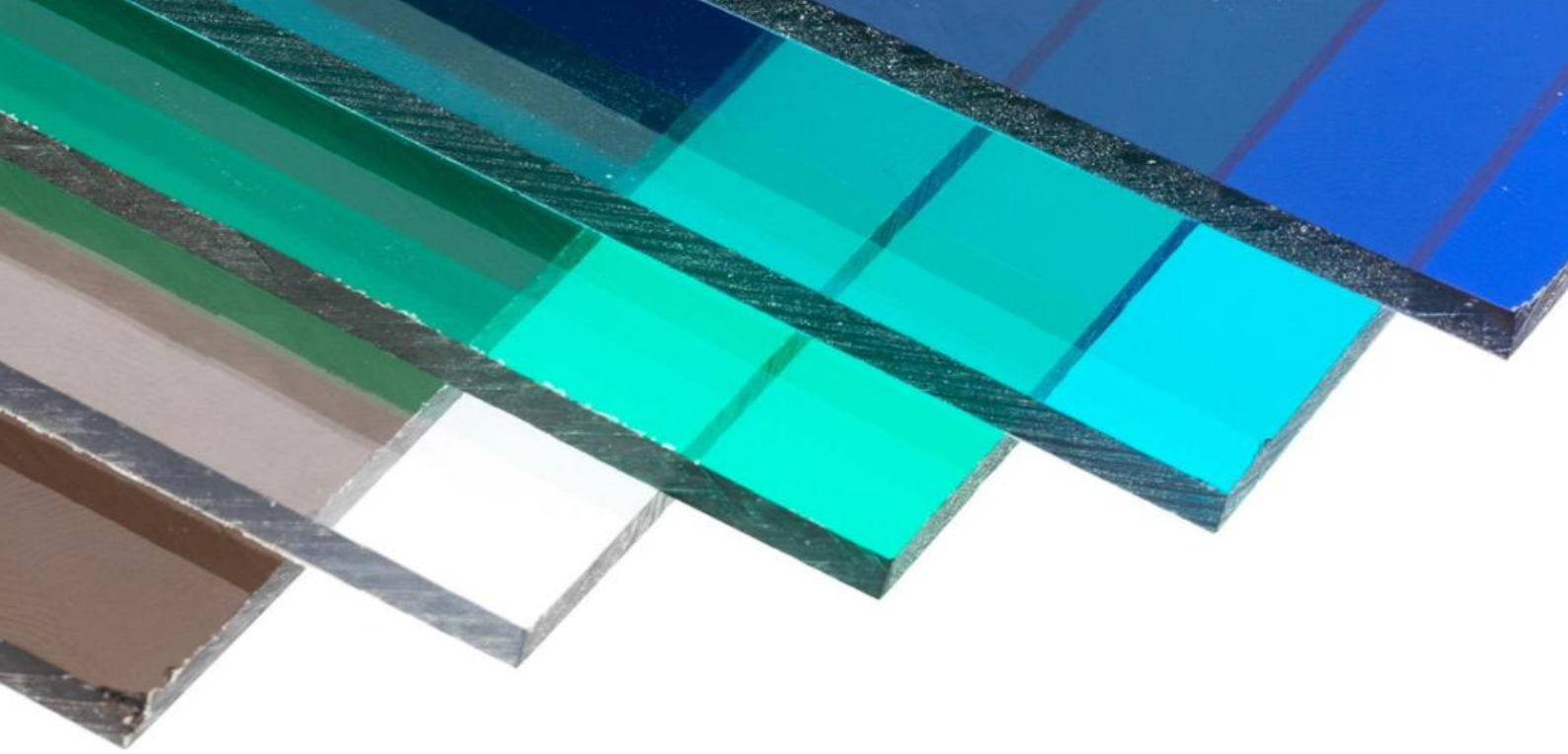


PC Sheet(Polycarbonate Solid Sheet)





PC Sheet is made of polycarbonate virgin materials (mainly by Bayer and Sabic), and refuses to use recycled materials.

The both sides of the sheet is covered with a 50 micron anti-ultraviolet UV coating to increase the service life of the sheets and provide a 10 years quality guarantee.

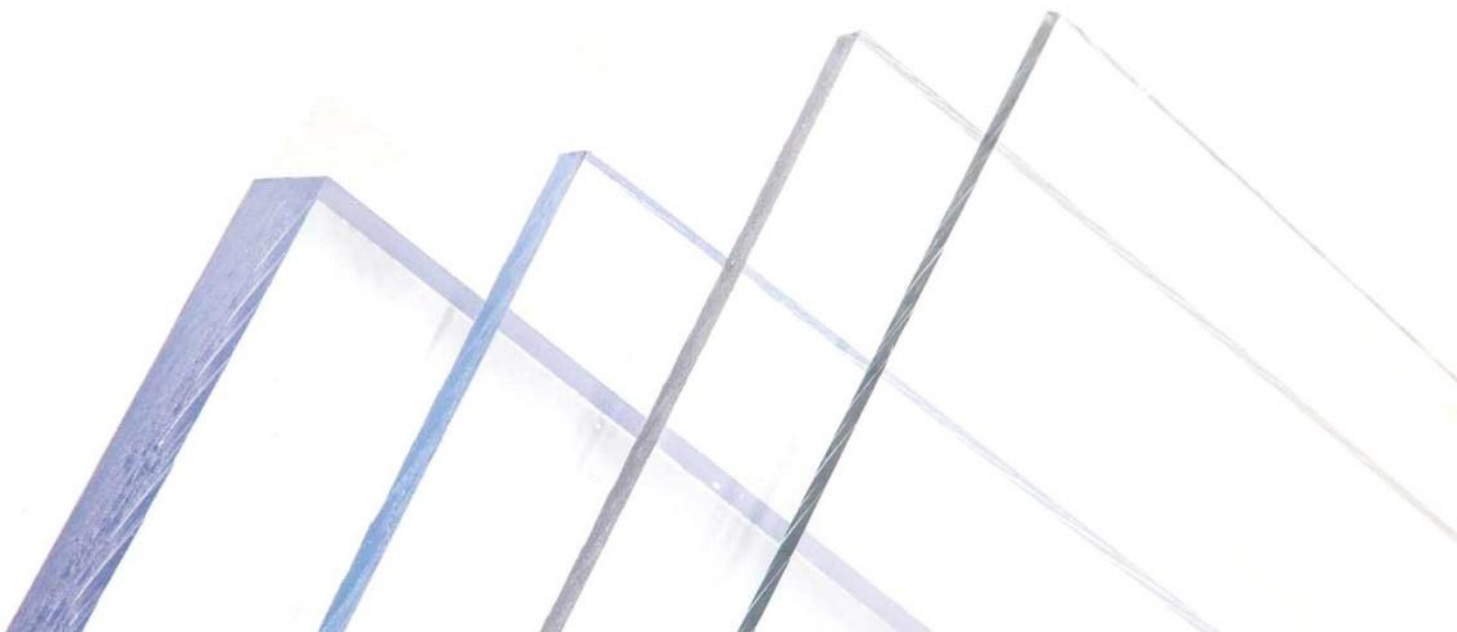
The sheet has excellent light transmission, and the light transmittance can be customized and adjusted according to the customers' needs. It has the characteristics of light weight and high strength, and at the same time has a certain thermal insulation function, which is widely used in greenhouses, building lighting, carports and rain sheds.

Features and Benefits

- Lightweight
- Very high impact resistance
- High light transmission
- Weather and UV resistance

Typical Applications

- Architectural roofing & glazing
- Unbreakable safety glass
- Explosion proof window / shield
- Shed / canopy
- Billboard



Size	
Width	1220mm、1560mm、1820mm、2100mm、 Customized
Length	Customized
Thickness	2mm、3mm、4mm、5mm、6mm、7mm、8mm、9mm、10mm
Color	Clear、Bronze、Blue、Green、Opal、Grey...
Roll	1.22*30M/Roll、1.56*30M/Roll、1.82*30M/Roll、2.1*30M/Roll
Sheet	1.22*2.44M/Sheet

Solid sheet Performance table(JG347T-2012Polycarbonate(PC)Solid sheet):

No.	Category	Unit	Values	
1	Tensile Property	Tensile yield stress	MPa	≥55
2		Fracture strain	%	≥60
3		Tensile modulus of elasticity	MPa	≥2200
4	Charpy Notched Impact Strength		KJ/m ²	≥6
5	Tensile impact strength		KJ/m ²	≥150
6	Drop impact	Maximum penetration	N	≥600
		Maximum penetration energy	J	≥5
7	Vicat softening temperature		°C	≥145
8	Thermal deformation temperature		°C	≥130
9	Heating dimensional change rate	1.5≤d≤5	%	≤10
		a≥5		≤5
10	Coefficient of thermal expansion		°C ⁻¹	≤7.5*10 ⁻⁵
11	Transmittancea	1.5mm	%	≥85
		3mm		≥83
		4mm		≥82
		6mm		≥80
		12mm		≥75
12	Haze		%	≤5.0
13	Weather resistance (2000h)	Chromatic aberration	-	≤5.0
		Yellow index change	-	≤3.0
		Drop weight impact (perforation characteristics) retention	%	≥60
14	Ultraviolet transmittance		%	≤0.001
15	Combustion performance		/	B

Only applicable to transparent plate inspection.

Polycarbonate raw materials Performance table(JG347T-2012Polycarbonate(PC)Solid sheet):

No.	Category	Values	Test method
1	Tensile yield strength/MPa	≥60	GB/T 1040.1-2006 GB/T 1040.2-2006
2	Tensile modulus of elasticity/MPa	≥2200	GB/T 1040.1-2006 GB/T 1040.2-2006
3	Bending strength/MPa	≥60	GB/T 9341-2008
4	Flexural modulus of elasticity/MPa	≥2200	GB/T 9341-2008
5	Shore hardness/HA	≥80	GB/T 2411-2008
6	Load deformation temperature/°C	≥125	GB/T 1634.2-2004
7	Coefficient of linear expansion (-30°C~+30°C) /°C ⁻¹	≤6.5*10 ⁻⁵	GB/T 1036-2008

*For your reference only

INSTALLATION GUIDE



1、 STORAGE: Sheets should be stored in a cool and dry place. Exposure to the sun (the protective film will be difficult to remove), rain, and direct stacking on the concrete floor are strictly prohibited.

2、 SEALANT: Use neutral silicone sealant, and it is strictly forbidden to replace it with acid-alkaline glass glue. If damage occurs in this situation, warranty is void.

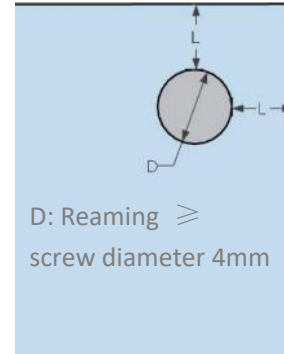
3、 SCREW FIXATION: When installing the sheets with screws, special waterproof gaskets must be used, and self-tapping screws cannot be directly driven into the sheet surface. Each screw hole position on the sheet needs to be pre-drilled, and the diameter of the drilled hole should be 4mm larger than the screw diameter to allow for thermal expansion, providing enough space to allow for seasonal temperature fluctuation.



The curved project cannot be fixed with screws on the board surface



Waterproof

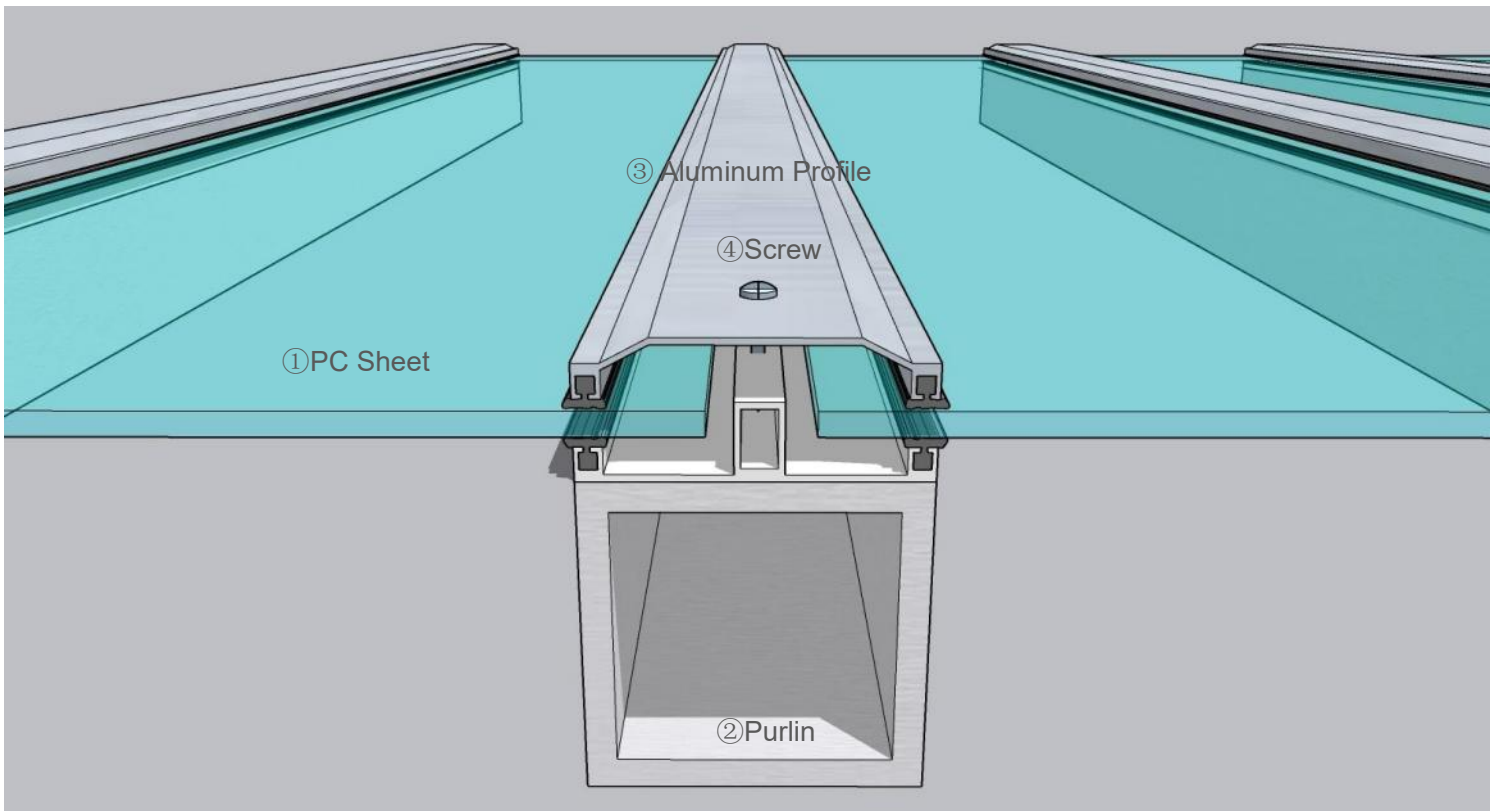


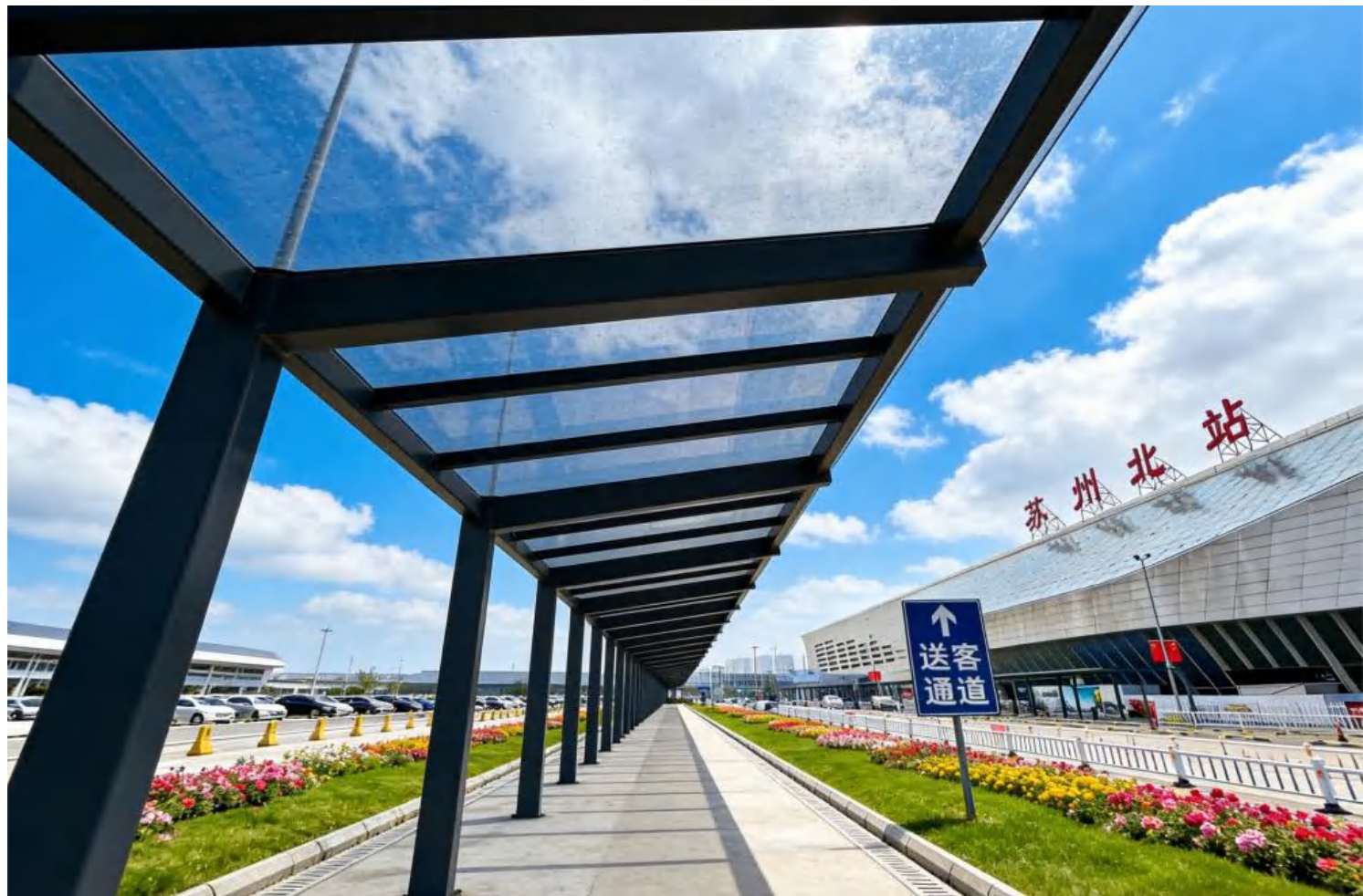
L: More than 30mm from the edge

D: Reaming \geq screw diameter 4mm

4、 USE ENVIRONMENT: The sheet is afraid of acid and alkali, and can not directly touch the concrete brick wall, and can not be used in acid or alkali materials and gas environments.

*If the construction is not carried out as required, there will be no warranty.















E-Mail: polycarbonatesheet@qq.com